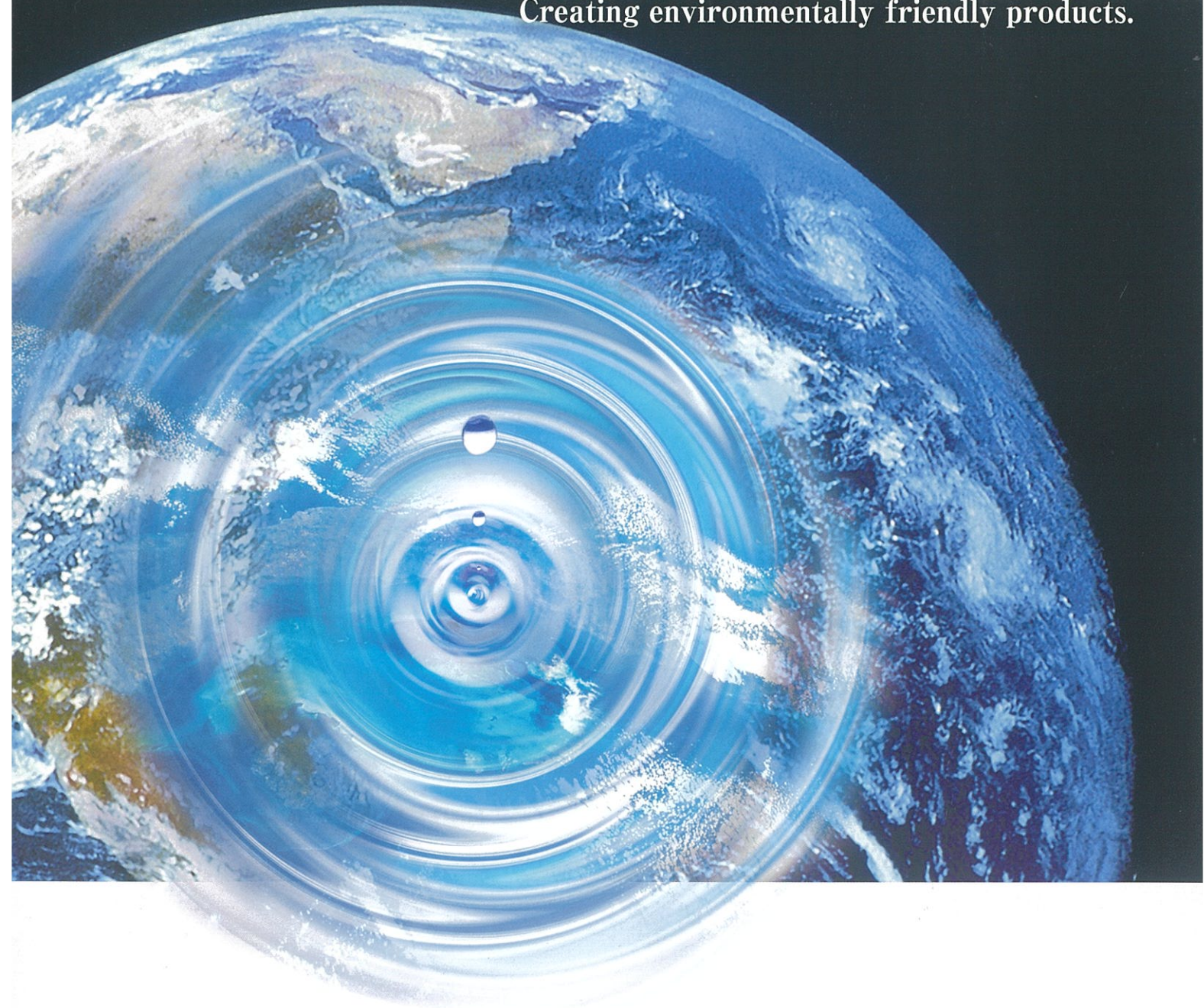


# KYODO Company Profile



Creating environmentally friendly products.



Kyodo Group is focusing on developing its sports business

# Kyodo will achieve even greater results through consolidation and innovation.

Since the founding of our company in 1939 we have turned out a variety of products in our core businesses of rubber and plastics, garden equipment, precision machinery, creating the ambient environment surrounding semiconductors, and more. In particular, in recent years we have been producing products that are “human- and environmentally-friendly” as a new business.

With such products as our goal, we supply motorized machinery products and robotics products that offer benefits such as being quiet or cutting down on exhaust fumes, with these garnering rave reviews from different sectors.

We are also putting our efforts into developing proposed products for things like unit modularization, and actively promoting the production of new ideas in physical form.

The trend towards an increasingly borderless business environment has been picking up speed in recent years, during which time the Kyodo Group has been establishing rapid and stable production structures for everything from limited production to mass production of multiple different products by means of consolidating through harnessing the strengths of each country.

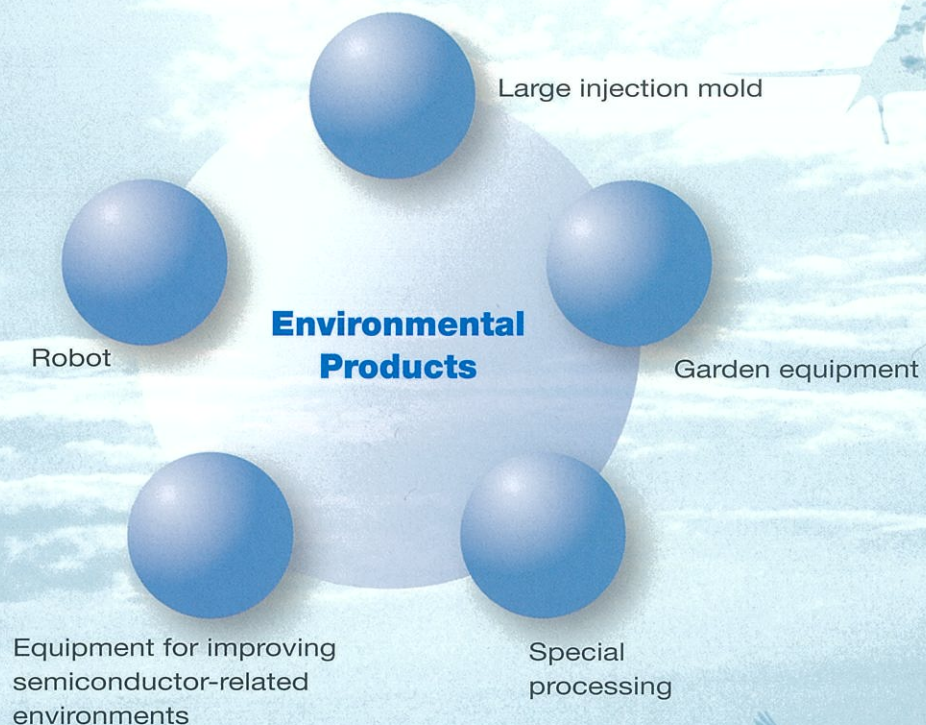
We have also earned the trust and satisfaction of our customers over the long run by providing products that are outstanding from a price competitiveness perspective while also maintaining “Japanese quality.”

Moving forward, we intend to make every effort as we strive to be a company that can always be relied upon from our customer-oriented standpoint.






Hiroshi Saito  
President

**Kyodo** engages in the research, development, production, marketing, and servicing of environmental loads reducing products in our key business fields of rubber and plastic, garden equipment, high-precision processing, construction of semiconductor-related environments, and robots. By proposing these Environmental Products to our customers, we will continue to make efforts to push the global environment in a better direction.



### **Kyodo's Managerial Principles**

-  We strive to be a company that shares its joy with its customers and clients, and in turn is trusted and beloved by them.
-  We strive to be a company that respects each and every one of our employees and that is capable of holding lively discussions.
-  We strive to be a company that can constantly contribute to the community as a member of society.

# Large injection mold

**Facilities**

## Super-sized injection molder introduced to help with manufacturing of Environmental Products. Challenges produce outstanding results.

Our 4,000-ton scaled injection molder is capable of manufacturing large resin products previously considered impossible to commercialize.

It has been further upgraded so that it can mold engineering plastics, enabling flexible designs, including those of high-precision products.

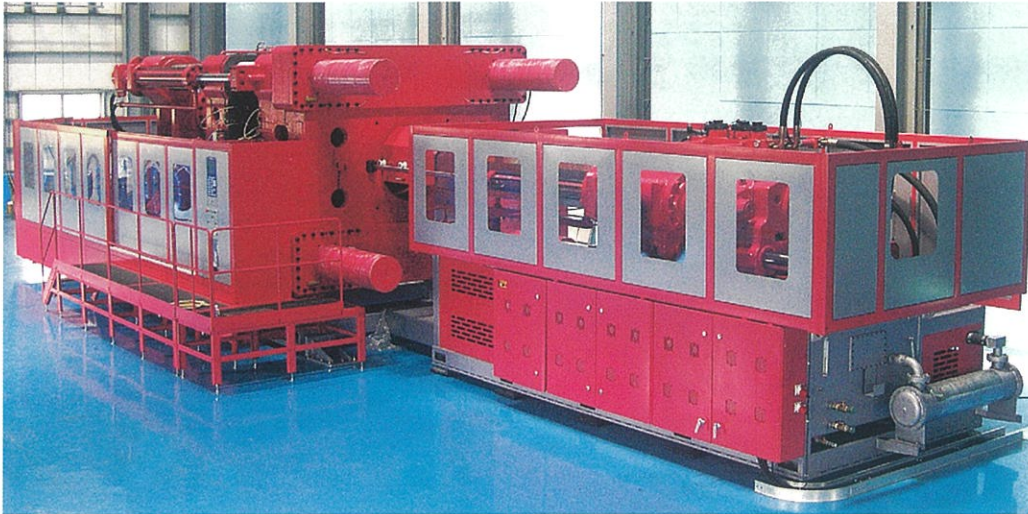
We have improved fuel efficiency of industrial machinery and automobiles, delivering resource and weight savings through measures such as switching from metal products and FRP. It makes a significant contribution to the control of CO<sub>2</sub> emissions and the conservation of the environment.



## Super-sized injection molder (4,000 ton)

Kyodo's super-sized injection molder is the largest of its class in Southeast Asia as of 2009, and it delivers cost reduction with its newly-introduced internal metal mold design. We have made the once-impossible possible. We promote improved quality, productivity, and economic efficiency, and meet our customer's needs and requests quickly.

Key Specifications	Unit	Value	
Mold tightening power	ton	4,000 (400 mm for the main pole)	
Mold tightening stroke	mm	2500	
Mold securing plate dimensions (HxV)	mm	3,230 × 2,920	
Mold opening power	ton	45	
Injection volume (PS)	g	16,025	23,935
Screw diameter	mm	Φ 180	Φ 220
Screw stroke	mm	700	



Tractor fender

Hopper

Fork lift rear cover

Passenger car bumper

## The new form of Kyodo's contributions to the environment. Our creative excellence leads to your success.

Garden equipment contains small engines that are usually started with a recoil starter. This type of mechanism requires the pulling of a rope to start and generally has a problem with stability.

So we have developed the sel-motor switch that can start engines up to 40cc-class. In addition to this, it can play three roles with a single engine.

Here's a professional working machine that is not a grass cutter, hedge trimmer, or blower.

### Hedge trimmer

Traditional engine-powered hedge trimmers put a significant weight on the arms of users, making it difficult to use them continuously over a long period of time. We have separated the engine from the mower unit, resulting in weight saving and much higher working efficiency.

### Blower

While all handheld blowers had previously fallen into the 20cc class, we have enabled the creation of larger-sized blowers, such as 30cc and 40cc classes, by separating the engine from the blower unit.

### Grass cutter

Based on our track record as an OEM manufacturer with the highest output in the Southeast Asia region, we have implemented in-house production of gears and sel-motors. In addition to this, we have also introduced a 40cc sel-motor grass cutter.

**One-touch starting with the sel-motor**

The engine can be started with the ON/OFF switch located near the grip.

## Battery-powered electric grass cutter

Since it is battery-powered, this grass cutter emits no CO2 while in use and is a very eco-friendly product. With a flat motor, it delivers high cutting power with a lightweight body while controlling vibration and noise. We have also taken user-friendliness into account and have gained a successful track record for implementation in places such as hospitals and schools, which require a quiet environment.

Handle designed with safety and security in mind

### Completely operable with one hand

Safety switch  
Speed controller  
Start switch  
Highest speed switch  
Safety lever  
\* Left-hand model is available through custom order



Nickel hydride dry-cell battery reduces the running cost

Using nickel hydride battery. Recharges in about four hours.

Removable with one touch

## Assembled products

Available worldwide, including plants in the U.S., Taiwan, Thailand, and China.

We also engage in the assembly of finished products for various garden equipment and agricultural and forestry devices, including trimmers, grass cutters, blowers, chainsaws, and their related accessories



## Structural components of brush cutters and trimmers

We adhere to a strict inspection schedule based on our years of technological expertise.



Grass cutter gear case assembly



Grass cutter back-pack frame



For small-sized generic engines recoil starter



Nylon cutter

# Products Portfolio

*Comprehensive Power*

## Demonstrating Kyodo's eco-friendly policies and composite technical strength.

We produce more than half of our outboard motor components internally. Our fuel tanks and hoses are compliant with world-class environmental regulations. With an enhanced range of inspection equipment and thorough quality assurance, we are ready to begin complete internal assembly.

Multi-structured blow molded fuel tank



CO2 control hose



Engine cover (plastic product)



Outboard shafts (friction welding)



Recoil starter



Gear case



Gears





## Blow-molded products

From fuel tanks with multi-tiered blow molding to related commercial parts such as caps, hoses, and pumps, our products prevent gasoline permeation with specification values well within the U.S. national regulation standards for evaporation. Moreover, they can all be recovered. This demonstrates the leverage of Kyodo's policy of being thorough when making eco-friendly products.



Multi-tiered fuel tank for outboard motor

Hoses/Pump

Cap

## Plastic products

Using various production methods, we have commercialized lightweight plastics that combine flexibility with strength. Our products, ranging in size from small precision plastic parts to super-sized moldings, are capable of supporting a wide range of customer needs. We have also been working on the development of new materials in cooperation with raw material suppliers, enabling the proposal of various new solutions in plastics.



Grass cutter back-pack frame

Handheld blower cover

Blower fan

## Rubber products

Starting with industrial rubber, Kyodo has manufactured various products, ranging from supersized to precision parts.



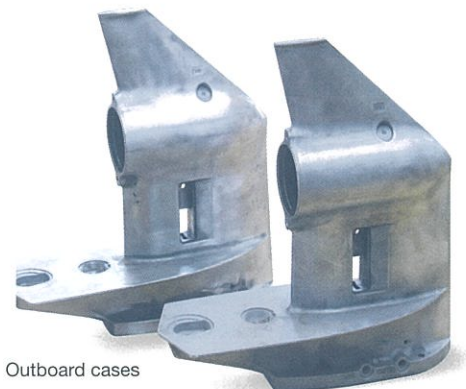
Various kinds of bumpers

69-core connector

16-core connector

## Die cast products

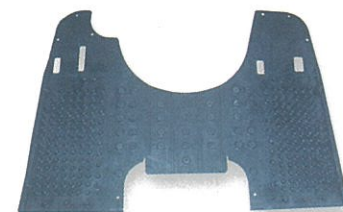
Besides ADC12, we produce die castings for outboard motors as well as corrosion-resistant ADC3. We are also able to deal with painting.



Outboard cases



Large rubber mould  
148.2 cm x 148 cm



Floor mat



Rubber roller

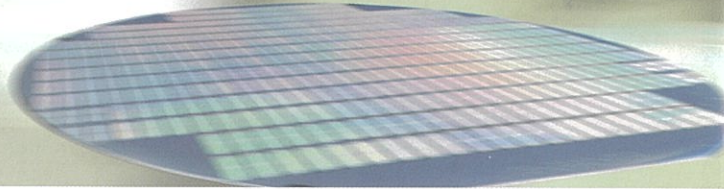
# Equipment for improving semiconductor-related environments

(Equipment for improving probe card environments)

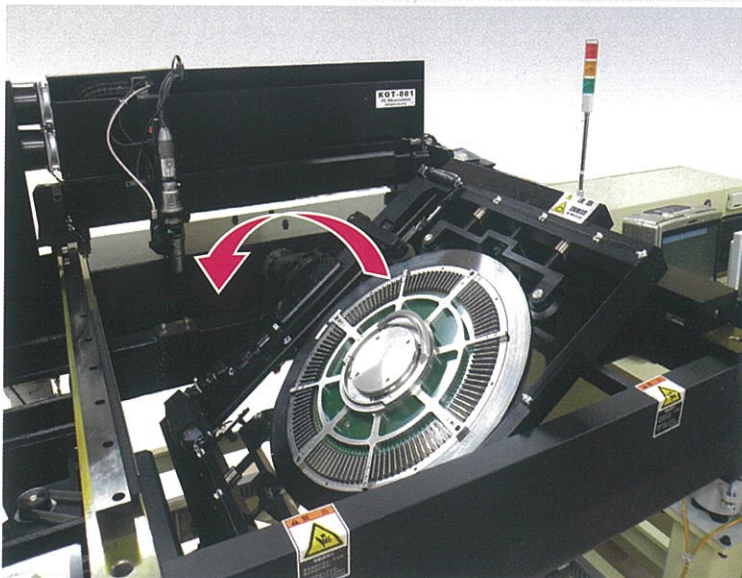
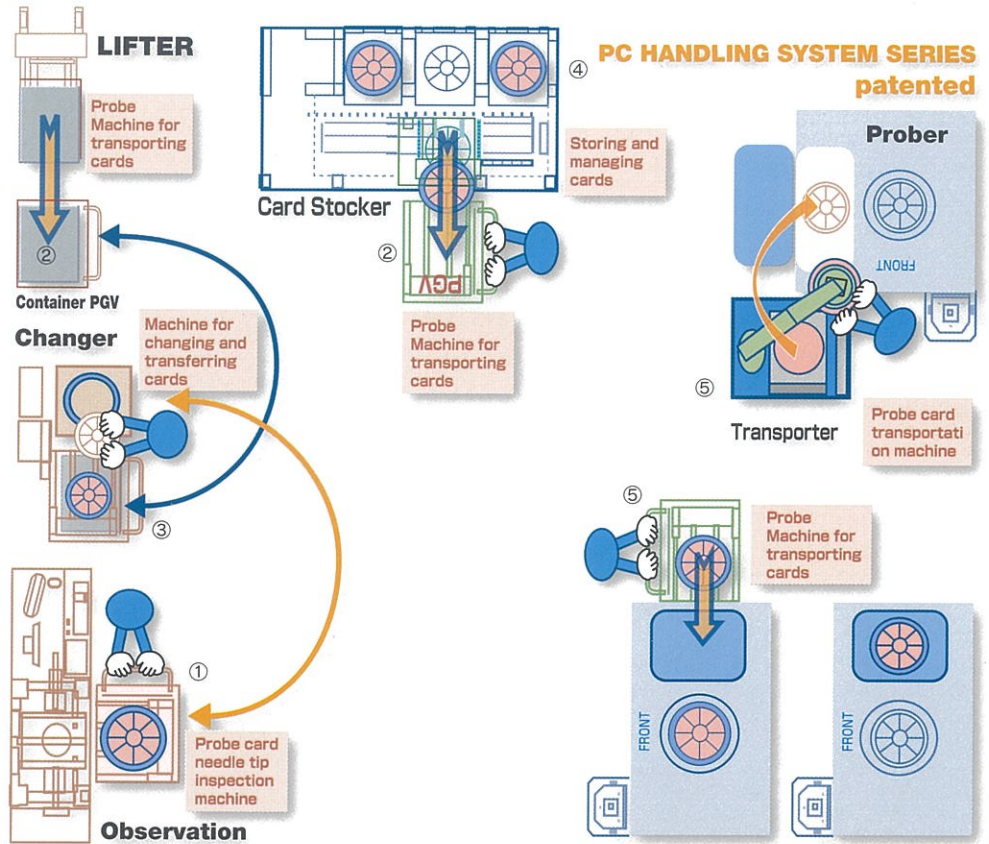
*Nano Technologies*

The equipment developed and manufactured by Kyodo enables the smooth inspection, management, storage, movement (transport), and security of probe cards, improving the inspection environment for semiconductor wafers.

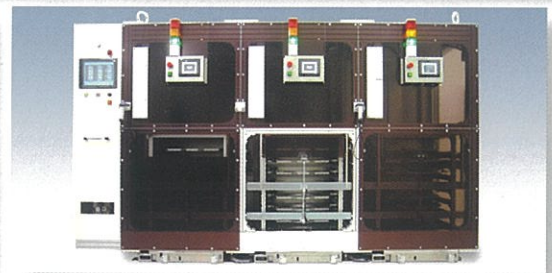
Looking one step further into the future, we have built our semiconductor plant business.



- ① **Inspect**  
**Observation**  
(Machine for inspecting needle-type probe cards)
- ② **Transport**  
**PGV**  
(Machine for transporting probe cards)
- ③ **Lift and Transfer**  
**Changer**  
(Machine for changing and transferring probe cards)
- ④ **Store and Manage**  
**Card Stocker**  
(Storing and managing probe cards)
- ⑤ **Load**  
**Transporter**  
(Transferring and helping load probe cards)



① KOT-001 PC Observation Japanese company TP \* Using modification functions other than the needle inspection function.



④ CS-48T Card Stocker Japanese company TP



④ CS-40 Card Stocker Korean company S

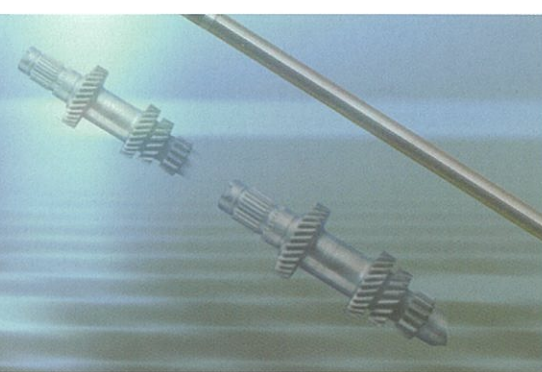


② AKT15-200 Electric, double-banked type

# Special processing

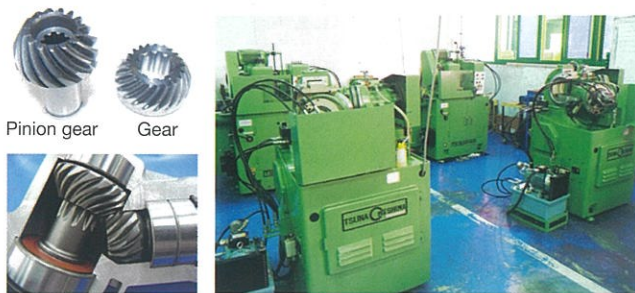
*In-house Manufacturing*

We have implemented full production control through internal manufacturing and processing. We meet advanced customer needs, including the quality of products and the deadline for delivery.



## Gear Cutting

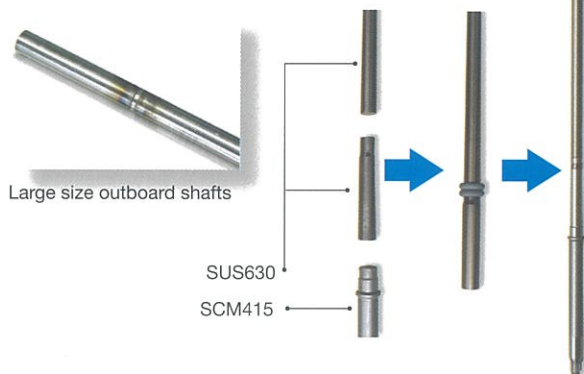
We have successfully produced Grison-type spiral bevel gears. Gears with high-precision engagement have been manufactured.



Cross section of a grass cutter gear case

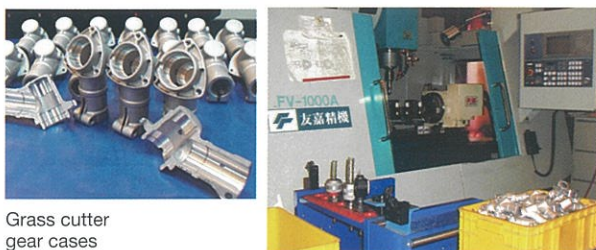
## Friction welding

This technology can weld heterogeneous materials together, such as stainless steel and iron. It also delivers high-precision coaxially while maintaining high welding strength, enabling a much higher degree of flexibility in design.



## MC Processing

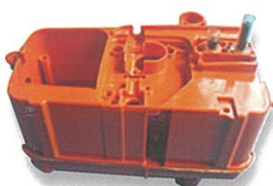
By enabling multi-axial, simultaneous processing, our technologies deliver.



Grass cutter gear cases

## Vibration Welding

This technology can weld complex resin shapes. It has been evaluated highly, especially for well-sealed containers for its excellent hermeticity.



Chainsaw body



## Ultrasonic Welding

We provide reliable technologies based on our vast experience, ranging from the production of welding jigs to the design of welding section shapes.



A closely welded pump cover



# Robotic products series

*Future Oriented*

User- and eco-friendly cordless robots of the future. Kyodo's spirit of challenge results in a world's first.

This line of robots is our ultimate answer for the creation of user- and eco-friendly products. Our automatic mowing and pool cleaning robots, which are the first in the world to be made cordless, are being used in various countries.

We will continue to introduce robots required for various fields.



L 300



L 50



## Automated lawn mowing robot

This robot performs mowing and battery charging automatically once the mowing area and program have been configured. It operates on Lithium batteries and features low environmental load, safety, and quiet operation.



L 200 series



## Automatic pool cleaning robot

### NEMO

Moving freely, this robot brushes away stains on the floor and sides of the pool. The debris from stains are then filtered out. It circulates water while working, keeping the water clean, and is fully automated from cleaning operations to the cleansing of filters and the recharging of batteries. The robot significantly reduces the effort and time required for the management of a pool.



# Kyodo's Quality Assurance and Environmental Activities

Under the keyword of "Creation," Kyodo is engaging in an ISO management program to ensure customer satisfaction with its advanced technologies.

Based on this, we have formulated our own system of quality assurance, and the entire process, including the planning, development, production, distribution, and servicing of products, is managed centrally at Kyodo's headquarters. Through these efforts, we are committed to improving the quality of the Kyodo brand, on which our customers can rely with confidence.



Kyodo is involved in green initiatives at home and abroad, and is engaging in its own environmental activities to leave a beautiful global environment to the next generation. We make contributions to a sustainable society through our proposals, designs, and the development of products to improve the environment. We also promote more efficient operations, resource and energy saving, and the reduction of environmental loads in our offices and plants. These environmental activities conducted in accordance with various laws and regulations on the environment and an ISO14001-based environmental management system.

## ISO 9001

### [Quality Policy]

We strive to become a company that contributes to local communities while ensuring the continuous growth of the company by providing the quality and technologies necessary to satisfy our customers at low prices.

### [Important Notice]

1. We promote and support quality assurance throughout our entire organization.  
All staff members, including those from the sales, engineering, purchasing, production, logistics, general affairs, and quality assurance sections, execute their respective duties with the improvement of quality in mind.
2. We seek to enhance the quality of our operations through the improvement of daily work, including our responses to our customers and communications.
3. When a problem occurs, we accurately determine its cause and respond to it quickly.
4. Our business sections plan and implement the activities required to meet their objectives with specific target levels for quality.
5. Our business sections all engage in improvement with cost consciousness.

## ISO 14001

### [Environmental Policy]

We at Kyodo, effectively utilize the technology we have developed and our business resources to not only protect the global environment but also to actively propose, design and develop products that improve the environment.

### [Important Notice]

1. We will create an environment management system, and carry out regular reviews and continuous improvements.
2. We will strictly abide by all environmental regulations of the country and municipalities, as well as other rules set down by the company.
3. We will design and develop products that are environmentally-friendly.
4. We will improve the efficiency of our business operations and to strive to reduce the burden to the environment.
5. We will strive to reduce waste and recycle in order to prevent pollution.
6. We will thoroughly enforce resource-saving and energy-saving measures.
7. We document our environmental policies, and make them known to all staff members and affiliates through means such as education, distribution, and notices.

## Product Quality Control

Adhering to the three principles of never producing, distributing, or receiving substandard products, we make the utmost effort to build quality into our manufacturing processes, such as by setting up lines dedicated to each product. In addition to this, we install various measuring instruments for each manufacturing method and manage an enormous amount of data. We also address the demanding specification requests made by our customers.



Gear engagement testing machine



3D measuring instrument



Hardness testing machine



Microtome device



Vibration testing machine



Height machine



Tensile testing machine (compression)



Tensile testing machine (elasticity)



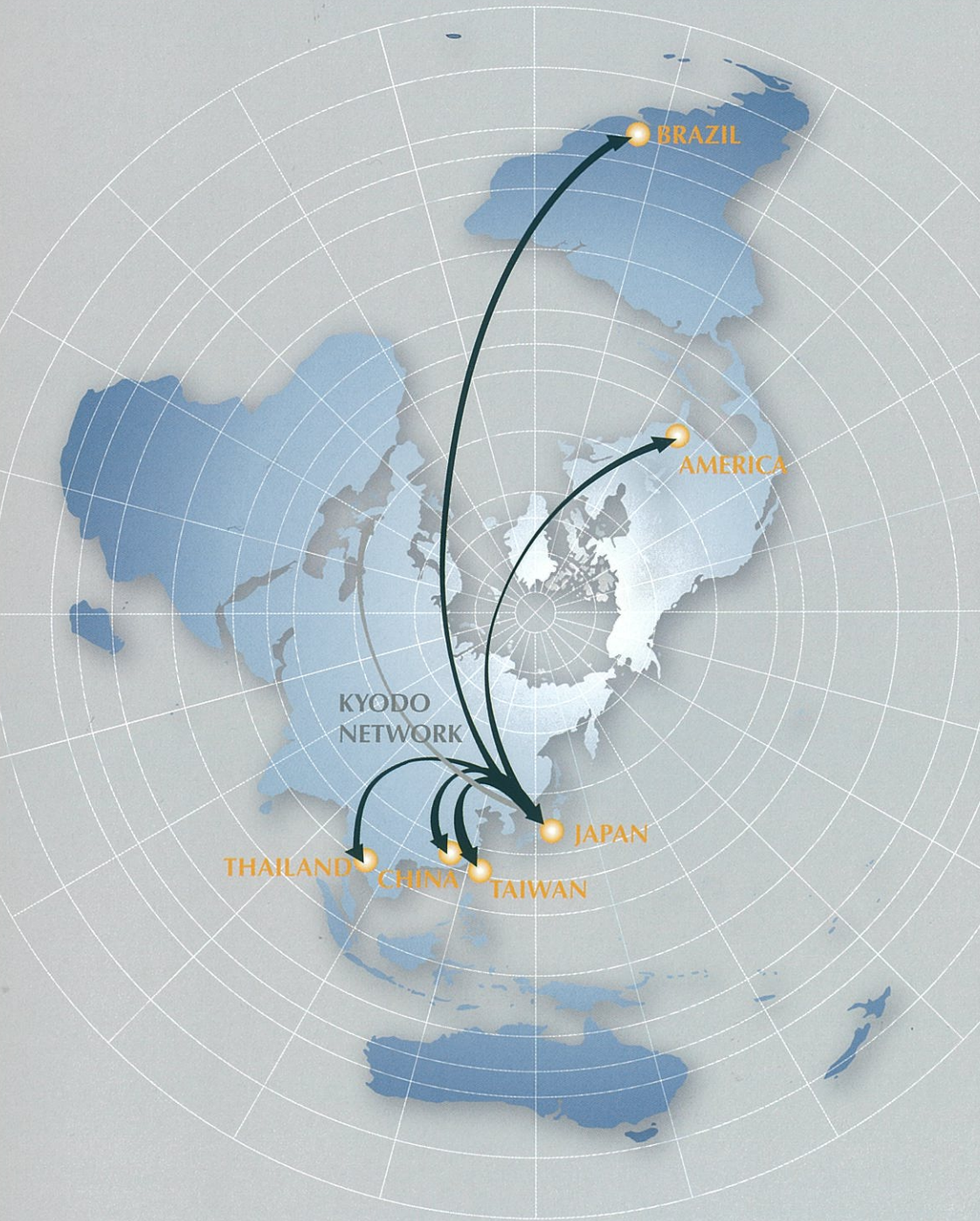
Thermostatic chamber

# Kyodo's Globalization

*Breakthroughs*

## Expanding worldwide, we have no borders or time-zone differences.

With globalization accelerating further, Kyodo builds its products without concern for borders or time differences. Under the policy of working closely with customers and providing quality, we have installed manufacturing plants in Taiwan, the United States, Thailand, and China, developing our global network. Beyond the frame of being a parts manufacturer, we can not only produce parts but also support subassemblies to integrate them, and finish products in a consistent manner thanks to our global network. In addition to this, we deliver advanced technologies quickly and at low cost, ensuring a high level of customer satisfaction. Our global network will expand to Europe in the future.



### JAPAN



KYODO CO., LTD. / Headquarters



KYODO CO., LTD. / Kyodo West Tokyo



KYODO CO., LTD. / Tohoku Sales Office

### Domestic Affiliated Companies

- FUJI RUBBER & CHEMICAL CO., LTD.
- KYOWDOW KASEI CORPORATION
- KYODO FINE CERAMICS CO., LTD.
- KYODOSHOJI, Inc.  
(holding company)

**THAILAND**



**SINGHAPRO CO., LTD.**

Shinghapro Co., Ltd. was established in 2003 and is a hub factory in Thailand. With an increasing demand in agricultural machinery in Japan and southeast Asia (mainly in Thailand), the company manufactures and provides Thai-made brush cutters of high commercial value, and contributes to innovation in and development of agriculture (agricultural machinery) in Thailand. In addition, the company manufactures plastic part and products, and is also involved in manufacture of sewn products. In 2005, the company obtained the ISO9002 certification.

**[Business Description]**

Assembly / agricultural equipment  
Parts sales / Plastic parts and products, sewn products, brush cutters

**TAIWAN**



**TAIWAN HIROICHI CORPORATION**

Taiwan Hiroichi Corporation was originally the Taiwan branch of KYODO CO., LTD., that conducted trade as their core business. In February 1992, the branch amalgamated with Taiwan Hiroichi Corporation, a plastic molding company established in Changhua, and restarted business as Taiwan Hiroichi Corporation, with 100% Japanese capital. The company manufactures agricultural and forestry machines, medical equipment, multipurpose parts and other equipment. The company obtained ISO9002 certification in 1995. The company obtained ISO14001 certification in 2008.

**[Business Description]**

Assembly / engine brush cutters, blowers, electric chainsaws, developing machines for medical use, units for minilabs  
Parts producing and sales / construction machinery, industrial machinery, various agricultural parts, various maritime units, others  
Forming / construction machinery, industrial machinery, agricultural resin mold goods, others  
Die sales / construction machinery, industrial machinery, agricultural resin mold goods, others

**AMERICA**



**KYODO AMERICA INDUSTRIES CO., LTD.**

Kyodo America Industries Co., Ltd. was established in September 1996 in Atlanta as KYODO CO., LTD.'s factory based in the U.S. KYODO AMERICA conducts businesses that include assembly of agricultural equipment, plastic molding and trading. In 2000, the company obtained ISO9002 and ISO2000 certifications. In widening and speeding-up logistics trends, and in speeding-up trends in commodity circulation, KYODO AMERICA's aims is for further development with customers the Kyodo group supply chain.

**[Business Description]**

Assembly / agricultural equipment such as engine brush cutters and blowers forming / construction machinery, industrial machinery, agricultural mold goods, others  
Die sales / construction machinery, industrial machinery, agricultural mold goods, others

**BRAZIL**



**KYODO South America Indústria e Comércio de Máquinas Ltda**

Founded in November 2007 and growing remarkably among developing countries, Brazil is highly promising as an agricultural market. In this giant market, we are focusing on selling customer-oriented agricultural and gardening equipment and OEM products, and are looking at the realization of locally-based procurement and production as our mid-term plan.

**[Business Description]**

Selling, importing, and exporting agricultural and forestry equipment as well as gardening devices.  
Grass cutters, power sprayers, engine pumps, blowers, etc.

**CHINA**



**DONGGUAN KUA FUNG ELECTRONICS & PLASTICS CO., LTD.**

This company was established in 1995 in Dongguan city, Guangdong sheng, and is a hub factory in China. The company employs an integrated system of plastic products manufacturing from development and design to molding, coating, printing, plating and welded fabrication, as well as assembly. Additionally, the company operates a trading business that includes sourcing and exporting electronic components, die forging parts and rubber parts made in China.

The company obtained ISO9001 in 2002.

**[Business Description]**

Forming / Plastic-related equipment  
Die sales / Die design, manufacturing and maintenance  
Parts sales / Sourcing and exporting electronic components, lost-wax-processed parts, presses, die forging parts, rubber parts and wire harnesses made in China



**TOMIKYO TRADING(HANG ZHOU) CO.,LTD.**

While our Dongguan plant who mainly covers Southern area of China, functions as production, procurement, and delivery, we opened the Hangzhou office to expand our high-quality service to other distant area.

**[Business Description]**

SSale and Export of Rubber, Plastic, Oil Seal, Metal Product, and the Molds of those products.



**KYODO** with environment



ISO 9001:2000  
Certificate of Registration Number  
C 2006-02902



ISO 14001:2004  
Certificate of Registration Number  
C 2009-00334

Kyodo Co., Ltd. has been certified compliant with ISO9001 quality management and ISO14001 environmental management systems.



Printed with 100% Vegetable Oil Inks.



Printed on 100% Recycled Paper.



**KYODO CO., LTD.** <http://www.kyodo-rubber.co.jp/>

**Headquarters** 20-2, 4-chome, Higashi-komagata, Sumida-ku, Tokyo 130-0005, Japan  
Phone: +81-3-3625-1371 Fax: +81-3-3623-5656

**Kyodo West Tokyo** 8154-27 Uenohara, Uenohara-shi, Yamanashi 409-0112, Japan  
Phone: +81-554-20-9030 Fax: +81-554-62-2303

**Tohoku Sales Office** 2-3-38, Yanagihara, Kitakami-shi, Iwate 024-0083, Japan  
Phone: +81-197-65-0684 Fax: +81-197-63-3227



# KYODO Company overview



## Company Profile

**Corporate Name:** KYODO CO., LTD.

**Location:** Headquarters  
20-2, 4-chome, Higashi-komagata, Sumida-ku,  
Tokyo 130-0005, Japan  
Phone: +81-3-3625-1371 Fax: +81-3-3623-5656  
URL: <http://www.kyodo-rubber.co.jp/index.html>

Kyodo West Tokyo  
8154-27 Uenohara, Uenohara-shi, Yamanashi 409-0112, Japan  
Phone: +81-554-20-9030 Fax: +81-554-62-2303

Tohoku Sales Office  
2-3-38, Yanagihara, Kitakami-shi, Iwate 024-0083, Japan  
Phone: +81-197-65-0684 Fax: +81-197-63-3227

**Established:** 1 September 1939

**Capital:** 12 million yen

**Settlement period:** 31 December

**Main Business Content:** This includes the design, development, manufacture, and sale of the following items  
1. Agricultural and forestry machinery, outboard motors, industrial machinery (plastic parts, die-cast parts, metal stamped parts, various rubber parts for industrial uses, etc.)  
2. Equipment related to the transport of semiconductors  
3. Robotics equipment

**List of Executive Officers:** Rinzo Saito, Honorary Chairman  
Morihiro Saito, Chairman  
(As of September 1, 2013) Hiroshi Saito, President  
Takeshi Saito, Executive Vice President  
Isao Iwasaki, Director & General Manager for Sales

## Principal Clients

Amano Corporation.  
B F Kogyo Kaisha Ltd.  
Daishin Industries Ltd.  
Hitachi Koki Co.,Ltd.  
Honda Motor Co.,Ltd.  
Husqvarna Zenoah Co.,Ltd.  
IHI Shibaura Machinery Corporation.  
IHI Star Machinery Corporation.  
Iseki & Co.,Ltd.  
Iwaki Co.,Ltd.  
Komatsu Cabtec Co.,Ltd.  
Komatsu Ltd.  
Konica Minolta Technoproducts Co.,Ltd.  
Laurel Bank Machines Co.,Ltd.  
Makita Corporation.  
Micronics Japan Co.,Ltd.  
Namco Bandai Games Inc.  
Nippon Dry-Chemical Co.,Ltd.  
Okayama Co.,Ltd.  
Otake Seisakusho Co.,Ltd.  
Sanritsu-Kiki Co.,Ltd.  
Sasaki Corporation.  
Sega Corporation.  
Sokkia Topcon Co.,Ltd.  
Tohatsu Corporation.  
Tohatsu Marine Corporation.  
Tokyo Keiki Inc.  
Tsukishima Kikai Co.,Ltd.  
Wado Corporation.

(in alphabetical order)

## Affiliated Companies

### TAIWAN

#### TAIWAN HIROICHI CORPORATION

No6, Kung Yeh South 5th Road, Nantou City  
Nantou Hsien, Taiwan R.O.C  
Phone: +886-49-2256511  
Fax: +886-49-2255090

### THAILAND

#### SINGHAPRO CO., LTD.

Rojana Industrial park (Rayong) 3/11 Moo 2,  
Bankhai-Bangbueng Road, Tambon Nongbua  
Amphur, Bangkok, Rayong 21120, Thailand  
Phone: +66-3896-1946  
Fax: +66-3896-1950  
e-mail: [singha@singhapro.com](mailto:singha@singhapro.com)

### JAPAN

#### FUJI RUBBER & CHEMICAL CO., LTD

1-6-2-106 Azumabashi, Sumida-ku, Tokyo,  
130-0001, Japan  
Phone: +81-3-3624-5621  
Fax: +81-3-3623-1730  
e-mail: [info@fujigom.co.jp](mailto:info@fujigom.co.jp)

### CHINA

#### DONGGUAN KUA FUNG ELECTRONICS & PLASTICS CO., LTD.

The Second Industry Town  
Guchong Wanjian district, Dongguan city  
Guangdong Province P.R. China  
Phone: +86-769-228-4756 or 4757  
Fax: +86-769-228-4750

#### TOMIKYO TRADING (HANG ZHOU) CO.,LTD.

Floor 3, No.10, Road 8, Hangzhou Economic and  
Technological  
Development Zone Zhejiang, China  
Phone: +86-571-8797-5352  
Fax: +86-571-8764-7292

#### KYOWDOW KASEI CORPORATION

4-38-1 Kamedo, Koto-ku, Tokyo, 136-0071, Japan  
Phone: +81-3-3682-6011  
Fax: +81-3-3682-6038  
e-mail: [leu07546@nifty.com](mailto:leu07546@nifty.com)

### AMERICA

#### KYODO AMERICA INDUSTRIES CO., LTD

8850 Progress Center Avenue,  
Lawrenceville, GA 30043  
Phone: +1-770-237-0364  
Fax: +1-770-237-8520  
URL: <http://www.kyodoamerica.com/>  
e-mail: [sales@kyodoamerica.com](mailto:sales@kyodoamerica.com)

### BRAZIL

#### KYODO South America Indústria e Comércio de Máquinas Ltda

Rua Amazonas n. 37-Vila Carvalho  
CEP-17205-101- JAU- SAO PAULO- BRAZIL  
Phone/Fax: +55-14-3624-6617  
e-mail: [ragazzi@netsite.com.br](mailto:ragazzi@netsite.com.br)

#### KYODO FINE CERAMICS CO., LTD.

2nd Fl. Nakamura Bldg., 6-14-3 Kamedo, Koto-ku,  
Tokyo, 136-0071, Japan  
Phone: +81-3-5836-4612  
Fax: +81-3-5836-4613  
URL: [www.Kyodo-fineceramics.co.jp](http://www.Kyodo-fineceramics.co.jp)  
e-mail: [info@kyodo-fineceramics.co.jp](mailto:info@kyodo-fineceramics.co.jp)

## Company Organization: Correlation Diagram

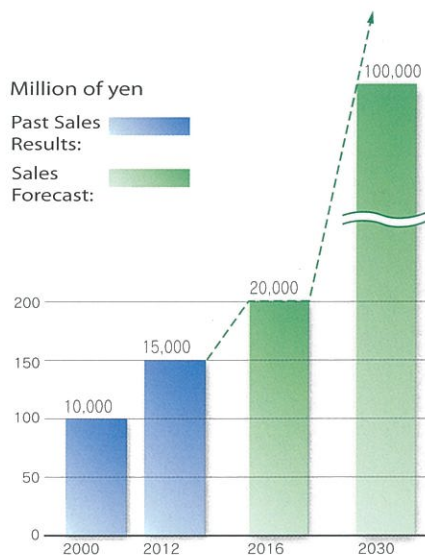
### Kyodo's Managerial Principles

- We strive to be a company that shares its joy with its customers and clients, and in turn is trusted and beloved by them.
- We strive to be a company that respects each and every one of our employees and that is capable of holding lively discussions.
- We strive to be a company that can constantly contribute to the community as a member of society.

### Kyodo's Managerial Policies

- Strengthen and promote domestic and overseas sales via development proposals.
- Take up the challenge of providing the required quality at record low prices (strengthen our Purchasing Department).
- Establish R&D Department.
- Achieve the stable production and supply of suitable quality goods.
- Strengthen and promote overseas businesses (local production, local sales).

### Sales Shift and Forecast of Kyodo Group



### History

- SEP. 1939 Kyodo Rubber Sales Office in 1-10 Azumabashi, Sumida-ku opened by Rinzo Saito
- MAY. 1948 Company organization changed to a joint stock company with capital of one million yen
- JAN. 1960 Company name changed to Kyodo Rubber Industries Co., Ltd.
- OCT. 1961 Location of headquarters moved to 4-20-2 Higashi-komagata, Sumida-ku
- DEC. 1970 Capital increased to 12 million yen
- DEC. 1975 New building completed (6-floor reinforced concrete building)
- OCT. 1977 Tohoku Sales Office opened in Kitakami-shi, Iwate
- NOV. 1987 Taichung branch opened in Taichung city in Taiwan
- MAR.1988 New factory opened in Kitakami-shi
- FEB. 1992 A locally-incorporated company, Taiwan Hiroichi Corporation, established, and Taichung branch amalgamated
- MAR. 1992 Kyodo West Tokyo Logistic Center opened in Mizuho-cho, Nishitama-gun, Tokyo
- MAY. 1993 Morihiro Saito appointed President, Rinzo Saito became Chairman
- JUN. 1995 Kyodo America Industries Co., Ltd. established in the suburbs of Atlanta.
- AUG. 1998 Logistic Center moved to Uenohara industrial park in Uenohara-cho, Uenohara-shi, Yamanashi and renamed Kyodo West Tokyo
- JUN. 2003 SINGHAPRO CO., LTD. established in Thailand.
- AUG. 2004 Kyodo West Tokyo completed extension work on building
- APR. 2005 The company name was changed to KYODO CO., LTD.
- NOV. 2005 Production of our new generation of lawn mowing robots commenced at our Hiroichi factory in Taiwan.
- NOV. 2006 Acquired ISO 9001 Acquired 9001:2000
- NOV. 2007 Established KYODO South America Indústria e Comércio de Máquinas Ltda in Sao Paolo, Brazil
- JAN. 2009 Acquired ISO 14001 Acquired 14001:2004
- AUG. 2011 We "KYODO CO., LTD." and our subsidiary "FUJI RUBBER & CHEMICAL CO., LTD." jointly established a new office in Hangzhou, China.
- SEP. 2013 Hiroshi Saito was appointed President, Morihiro Saito became Chairman, and Rinzo Saito became an Honorary Chairman.

### ISO



ISO 9001:2000  
Certificate of Registration Number  
C 2006-02902



ISO 14001:2004  
Certificate of Registration Number  
C 2009-00334

Kyodo Co., Ltd. has been certified compliant with ISO9001 quality management and ISO14001 environmental management systems.